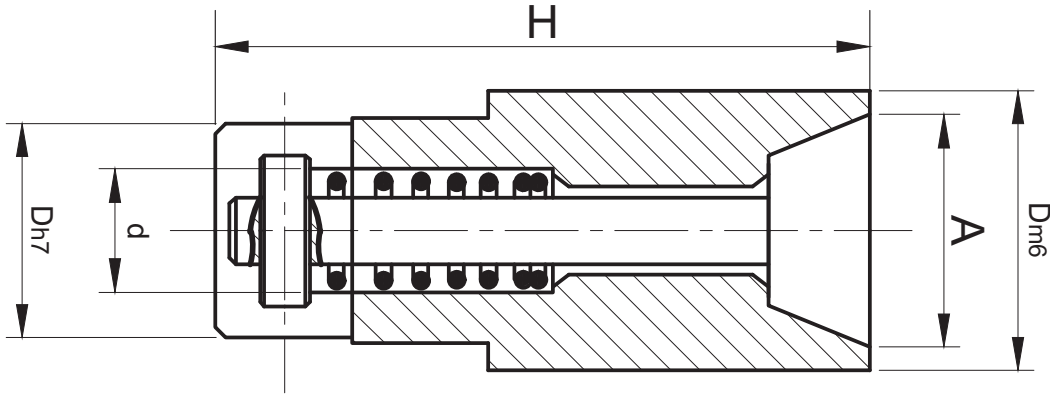


► Air Ejector (PPEA-B)

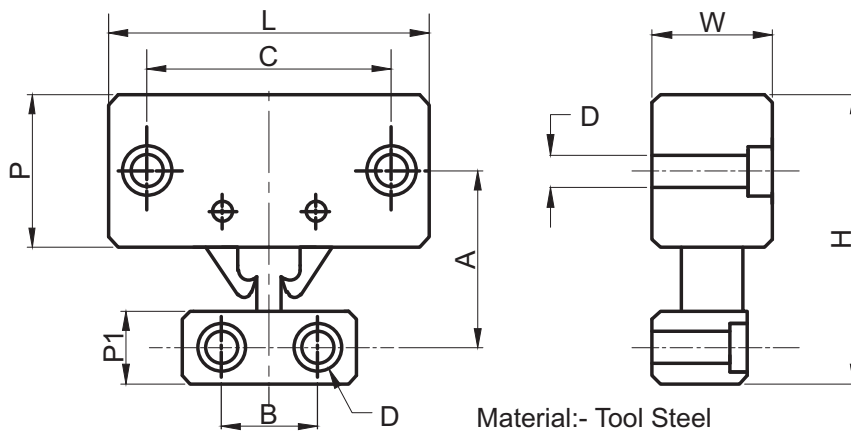


Material:- Tool Steel

Code	D	H	d	A
PPEA-B01	6	12	4.2	4.5
PPEA-B02	8	15	4.5	6
PPEA-B03	10	20	7	7.5
PPEA-B04	12	25	7.7	9
PPEA-B05	16	30	10.3	12
PPEA-B06	18	35	12	14
PPEA-B07	20	35	12.9	15
PPEA-B08	25	45	14.9	20
PPEA-B09	30	45	18	25

Order Type:- Code
Example:- PPEA-B04

► Mould Latch (PPLC-A)



Material:- Tool Steel

Code	Type	A	B	C	D	L	W	H	P	P1	Force(kg)
PPLC-A01	Light Duty	27.5	16	42	M6	55	22	44	25	13	45
PPLC-A02	Medium Duty	40	20	61	M8	80	28	70	38	18	110
PPLC-A03	Heavy Duty	60	30	95	M12	120	48	106	57	27	225

Order Type:- Code
Example:- PPLC-A02